



Issue No: 12 – 17 September 2018

IMPORTANT DATES

18 September

Year 12 Graduation Dinner

26 September

Year 12 Community Concert

27 September

Year 12 Farewell Assembly

28 September

Last day of Term 3

15 October

Term 4 commences

18 October

HSC commences

1 November

Year 11 2018 Parent Info Evening

12 November

P&C Meeting

14 November

Year 12 Formal

4 December

Speech Day

5 - 7 December

Year 10 Camp

10 December

P&C Meeting

11 December

Orientation Day

19 December

Last day of school

29 January 2019

Staff Development Day

30 January 2019

Years 7,11,12 return to school

31 January 2019

Years 8, 9, 10 return to school

From the Principal - Tim O'Brien

Speech given by the Tullamore Central School Captain during last week's visit:

" To the staff, students and school community of Epping Boys High School. My name is Lachlan Curr and I'm in Year 11 and School Captain of Tullamore Central School. We are a school of approximately 75 students ranging from Kindergarten to Year 12, with the 20 students here today making up the whole of the secondary department. For those of you (or probably most of you) that might not know where Tullamore is, it's a very small town of approx. 250 people within the town and approx. 800 within the wider farming community. It's located 6 hours away in the Central West of NSW, about an hour from the very centre of NSW.

First and foremost, I'd like to start by saying how grateful we are for this very kind and generous excursion you have provided us. Our school was overwhelmed to learn you had selected us to sponsor in such a kind way, in such hard times. Tullamore is primarily a farming town and community and relies heavily of the injection of the income of farmers to sustain local shops, businesses and services, to essentially keep the town going.

Drought is not a new problem for our community. We have seen more than a few droughts over the last century, however one of the main problems today is the fact we have had too many in a row in the last 10 or more years and it has made it very hard, and for some, impossible to recover from. Bank loans are maxed out, resources are depleted, stock numbers have decreased and no rain for months and months on end has meant that we haven't even been given the opportunity to sow our wheat and other crops. This obviously means that come harvest time in November when the farmers are gearing up for the stripping and payment of their crops, there's just nothing there to strip. Then, so begins the cycle of starting off the next year behind the eight ball and needing the grain and money amongst other supplies, to do it all again in the hope of making a living, on top of trying to make up for the poor season the year before. I live on a farm with my family. My father is a fifth generation farmer and I've seen these things first hand.

Farming and living in the country is a lifestyle and a passion, so that's why farmers will give it everything they've got, before they even think about asking for a hand. It's not a solution to say "move away" or "get another job". Often country life and farming runs deep in the veins of generations and may be a hard thing for some to understand. I will add, while the hard times are extremely tough, the sense of community we have and the will and drive to band together in Tullamore, is second to none and we don't give up. We are all in the same situation and have got each other's backs and do our best to support each other.

This opportunity we've been given by you means many different things to our secondary students. For some it means having a break from looking out the window every single morning and seeing bare red dirt and dust storms, sheep and cattle lining up waiting to be fed. For others it has meant enjoying a longer-than-normal, hot, guilt-free shower, not worrying about if you're down to the last couple of litres. A break from worry and stress, as well as a break from hearing daily, just the words - drought, money, banks and bills.



Thankyou to



Auburn,



Macquarie Centre,



Macquarie Centre,



for their generous assistance in providing goods and services in support of our Friday for Farmers fundraiser and the Tullamore visit.

Tullamore Central School

But one thing this week has meant to ALL of us is smiles, good times and the recognition of the generosity and thought that has gone into making this the great week that it has been. Your support means a lot. I'd like to make special mention of the staff and students who have spent time with us this week. Your thoughtfulness, generosity and companionship has been greatly appreciated by us all. This experience has been made all the better by meeting fantastic people like you.

I urge any of you to visit the Central West when you can. Look us up and see why we love where we live. Come and spend some time on a farm and see what all the fuss is about.

Once again, thank you so much, we sincerely appreciate what you've done. It has been great to establish such a partnership with your school. Please know you have made a positive difference to all of us here from Tullamore Central School, living in the drought."



Relieving Deputy Principal Senior School - Seddique Martin

Farewelling Our Beloved Year 12's: This is definitely the best time and the most fun of all your school days. Preparation for the community concert, Farewell assembly and the formal is well underway.

Boys and parents are reminded that the Department and school **does not support any 'muck up day'** and students could jeopardise their position at the school if caught behaving inappropriately.

Perhaps not as much fun at home for the parents and guardians of these young men...this can be very taxing and stressful. At this stage, it is all about organisation, preparation and managing "**STRESS**". The boys should really savour these last days of school, as it comes to a sudden and abrupt end. One morning they wake up and have nowhere to go, no need to rush and more importantly, no familiar faces around them to comfort them and give them a sense of belonging.

For students and parents there are many options for help. A reminder that the school wellbeing website is a great tool for support: <https://web1.eppingboy-h.schools.nsw.edu.au/wellbeing/>

Please remember that the HSC is not the, 'Be all and END all'. It is the start of new opportunities, challenges and adventures. I hope you all enjoy your last few weeks at school and wish you all the best of luck for the HSC examinations.

Our Year 11 boys are currently doing their final Preliminary examinations in preparation for their HSC next year.

7 Tips for Managing HSC Stress

1. Remember that there are other pathways into many careers. It's not the end of the world if you do not get the marks you want. Investigate other ways of getting into the course you want to do so that you know you have other options.
2. Best-case scenario - too often when we think about the future we start thinking about what will happen if we fail. We picture the worst-case scenario or we hear a voice saying we cannot do it or we feel that we are going to fail. Then we start feeling stressed or anxious. As soon as you notice yourself doing that... 'STOP' and start focusing on the best-case scenario.
3. Exercise helps the flow of blood to your brain. You will find that if you do some exercise daily, you will be able to concentrate more and get more studying done! Walk in a place of nature, as natural surroundings seem to trigger relaxation responses deep in the brain. Exposure to daylight also has positive effects on mood – another benefit of exercising outdoors!
4. Avoid caffeine - I know this sounds boring but drinks like coffee and coke give you a quick hit of blood sugar but then your blood sugar levels actually drop further than they were before you had the drink! So caffeine really prevents you from studying better. If you are feeling tired, have a break and do some exercise!
5. Have regular breaks - put down your books or get up from the computer for ten minutes every hour. Moving around gets the blood flowing and eases tired, cramped muscles.
6. When the feeling of stress or anxiety starts to build, imagine yourself somewhere relaxing. Where do you go to unwind? What do you do there? Who are you with? Just imagine yourself there.
7. This is a great process for when the feeling of stress is so strong that it is difficult to relax.

Begin by relaxing yourself as much as you can. Then think about the HSC or whatever is causing the stress. Get in touch with the feeling of stress or anxiety in your body. Where is it? Is it in your stomach, your chest, shoulders or head? Or it may be that you feel your stress somewhere else.

Finally, congratulations to all students on the magnificent job they did fundraising for our cousins from the country. Yet another extraordinary effort by EBHS and a memorable week for Tullamore Central School senior students with surfing lessons at Manly, Taronga Zoo visits and walks around the city. They travelled by bus, train, rivercat and ferry, and have seen most of what Sydney has to offer.

Tullamore captains Lachlan Curr and Amie Walker addressed the assembly to thank the boys. This was well received and much appreciated. EBHS looks forward to maintaining this new found relationship and hopes to build on it for many years to come.



Relieving Deputy Principal Middle School - Jonathan Bailey

Another busy fortnight at Epping Boys

The Epping Boys juggernaut has continued full steam ahead with numerous events and activities occurring over the last two weeks including: The Art Exhibition, TAS Expo, Duke of Edinburgh Silver and Bronze walks, Teachers Vs Students sport competitions, CHS athletics, Summer Grade Sport rounds 1 & 2, Legacy Day, Jazz Band performance, P & C weekend working bee, Year 11 Exams, Tullamore Central School visit, Bundanon Art Camp, Narrabeen Academy of Sport excursion, HSC Music Practical Exams, Northcott Interschool athletics carnival for our IE boys, Macquarie University research project and so much more.

What an amazing school Epping Boys is with so many incredible opportunities for our boys, the dedication of the staff and enthusiasm of the boys ensures this exceptional learning culture at our school continues to grow and stay strong. Students are encouraged to continue getting involved.

Scripture / Non scripture reminders

All boys in Years 7 -9 should be attending scripture (with external scripture teacher) or non-scripture (quiet reading program with teacher supervising) from 8.45am – 9.15am every Wednesday morning. Boys who are consistently late or do not attend on numerous occasions will receive a before school detention. If you wish for your son / ward to change his scripture or non scripture class please email the school or return a signed permission note to Mr Bailey – Head Teacher of Administration.

R U OK day – Thursday 13 September

R U OK? Day is our national day of action dedicated to reminding everyone that any day is the day to ask, “Are you OK” and support those who may be struggling in life.

You’ve got what it takes – simple steps that could change a life:

1. Ask are you ok?
2. Listen
3. Encourage action
4. Check in



For more information on this health initiative please visit: www.ruok.org.au

SASS Recognition Week (School Administration Support Staff)

Last week was School Administrative and Support (SAS) Staff Recognition Week, a time to acknowledge and thank the often unsung heroes in our public schools.

Our SAS staff play an important role in the school community. They are often the first people you see when you enter a school and are essential to maintaining positive relationships with students, parents and the community.

SAS staff work in school offices, in classrooms and libraries and maintaining and caring for school grounds and buildings.

They are often the ones to tend to students when they unwell and they ensure the efficient management of school financial and administration functions.

THANK YOU



CAPA - Alison Howard, Head Teacher CAPA

Tuesday 4th September was a wonderful night that showcased the schools' talented artists, photographers and painters in the school hall. We had a fantastic response from the community and from 7pm the hall was brimming with people, which added a great energy to the night.

To celebrate the opening of the evening, a promotional video of the exhibition was played. Mr O'Brien opened the evening, followed by our guest speaker, Epping Old Boy, Harry Klein.

Year 12 student works were the highlight of the show and five boys were presented with certificates to acknowledge their significant effort and talent. Highly achieving students from Years 7 and 8 were also awarded with PBL certificates for engagement.

Artworks of the Year 7 and 8 recipients were shown on a screen which demonstrated their gifted ability to draw, paint or sculpt. Teachers were also commended for their creativity and efforts throughout the year to broaden students skills. Soon after everyone was free to enjoy looking at the artworks around the hall, with delicious sweet finger food and drinks provided by the school P&C Events Committee. A large variety of artworks were shown on the night such as photographs, fine chalk drawings, pencil drawing, large canvas paintings and even ballpoint pen drawings. This night really embodied the different approaches across different forms and is a definite highlight of EBHS.

Congratulations to Ms Chang for the high standard of work, reflecting her dedicated guidance of the Year 12 2018 Visual Arts class. Congratulations to all of the Year 12 Visual Arts students whose art works reflect talent and significant effort.

A special mention to the following boys:

Alex Wei Recipient of the 2018 School Auxiliary Art Prize.

Nicholas Neilson Outstanding Work

Harry Reckless Sustained Practice

Kelby Govender Highly Commended

Luke Niccol People's Choice Award

Thank you Ms Howard and Ms Wiseheart for making this amazing night so memorable.

Written by Sewon Kim – CAPA Promotional Team



P&C - Susan Day, President

P&C Meeting – 3rd September

Motion: That the P&C assign \$100,000 to a separate P&C 'Hall' account was passed.

Motion on Notice: That the P&C provide up to \$30,000 for audio-visual and lighting upgrade to the hall.

Art Expo and TAS – 4th September

The boys showcased their practical work. It is a great opportunity to see the diversity of projects created by our talented boys. This year the P&C award for Technology and Applied Studies was awarded to Jack Griggs for his well-crafted Federation style wash stand.

Spring Working Bee: Sunday 9th September

We were fortunate to have lovely weather on the day. 26 helpers contributed. A special thanks to Ms Ghorayeb and the new prefects who helped especially as it was the day before the start of the Year 11 exams!

We mainly trimmed plants, replaced plants, mulched and tidied up the garden beds. Thanks to Claire and Ian for sorting plants and organising jobs.



Chilled water bottle filling station

A second chilled water bottle filling station has been installed in the Yr 7 area.

Our meetings for 2018 will be held on the first (occasionally 2nd) Monday during term time at 7:30 pm.

For 2018 the Meeting dates are **Term 4:** 12th November; 10th December.

Meetings are held in the Common Room, B Block.

Susan Day, P&C President - 0418 213212



Congratulations to the Sport Captains 2018/2019

Ben H	Winter and Overall Sports Captain
Michael M	Summer Sports Captain
Aaron G	Swimming Captain
Callum J	Athletics Captain
Matthew B	Cross Country Captain

Congratulations also to **Sam B** and **Jackson D** for becoming members of the EBHS sports council. These boys will be organising lunchtime competitions from Term 4 this year.

Both boys are passionate about sport and physical activity and are looking forward to taking up the challenge of encouraging all boys at EBHS to participate in more physical activity.



NSW Secondary Schoolboys Shield - Tony Nelson, PDHPE



On Monday 27th August, the Mighty Epping Boys Table Tennis Team gathered together once again to compete in the NSW Secondary Schoolboys Shield at Sydney Olympic Park.

Similar to the Challenge Cup, each pairing played a number of matches within their pools against different schools in the hopes of qualifying into the top 16 for the knockout stages in the afternoon. For this competition however, rather than age groups it was an open competition, meaning that Year 7 students potentially played against Year 12 students.

There were some fantastic performances from our boys and continued displays of great sportsmanship. One of our teams qualified for the knockout stages, with the remaining boys played in singles repechage rounds.

Three of the boys made the quarter final rounds of the repechage, while Austin surpassed this to the semi-final stage.

Joe and Xander took the hard road all the way to the final match, playing against Killara, a team consisting of state level players. They fought hard and pulled off some great plays but were outclassed in the end, taking the silver medal. Watching these boys in action makes you appreciate the skill, technique and hours of practice that go into becoming a good Table Tennis player.

Table Tennis as a sport is growing in Australia and these young man are paving the way for a future dominant sport at Epping Boys High School.



EBHS



Prefect Camp 2018

On August 16th to August 17th, the newly elected 2018/19 Prefects went out on the school's traditional Prefect Camp. We went to the Sydney Academy of Sport & Recreation Centre in Narrabeen to build skills of coping, resilience and encouragement and to elect the school's Senior Prefect, Vice-Captain and Captain all within the span of two days.

The camp featured high ropes and towers for us to develop our skills as leaders and build our resilience by avoiding preying kookaburras. These opportunities allowed us to further get to know one another and to demonstrate our skills; be it encouragement, public speaking or making kookaburra calls.

The first moments of camp would uncover many truths about us. From unintentionally broken laws to broken limbs in horrific ways, but it was a way for us to get to know each other a little bit more. Compliments were given out to each of the prefects by each other and laughs were shared all around (as awkward as some of them were).

The first lunch at the camp was certainly a surprise for us. We were intensely preyed upon by onlooking kookaburras and magpies and we quickly learned what it was like to fend for our food... many of us were unwilling victims to the thieving beaks, myself included.

Lunch was followed by the giant swing and the leap of faith. Some of us even challenged ourselves to catch a rugby ball mid swing, which was highly unsuccessful. Towards the end, a lone SAS volleyball faced off against an improvised cricket bat, a large stick, and a head on collision resulted. The volleyball did not survive. May it rest in peace.

The following day had two very notable events for the prefects. One of which was a high ropes course, where we would tackle tree-top challenges on an artificially built course, followed by jumping off said course onto a flying-fox. This was about challenging each of us to approach the same obstacles in different ways.

The most important event of the camp was the last to happen. On the first night, we were informed about the roles of the position of Captain, Senior Prefect and Vice-Captain. The following afternoon, the voting for these three roles took place. Many prefects ran for these roles, each making an impromptu speech of why they are deserving of the role. In the end, only three were elected for these positions. The 2018/19 School Captain, Head Prefect and Vice-Captain are, respectively: Tim Cornell, Logan Wade and Luis de Lima. Congratulations to these three boys.

Axel Gesang, Prefect



Year 8 Debating - Genevieve de Souza

Congratulations to our Year 8 Debating Team who have performed strongly in their heats in the Premier's Debating Challenge.

The team consists of Arinath Gobinath, Mubeen Khan, Thomas Kim, Arthur Lee and Ayur Wani.

In the first round, the team came up against Mosman High School with our team arguing the negative side for the topic, 'That social media should be banned for under 18 year olds'. In true millennial style, the team put forward strong arguments for keeping social media accessible for those underage, citing logical examples where social media has been used for positive communication and even personal safety.

In the second round, our boys debated their way to victory against the first of two Ryde Secondary College teams. They gave a strong case for the affirmative, 'That we should ban the sale of tobacco in Australia'. The adjudicator particularly praised the cohesion of their argument across the speakers.

In the third round against the second Ryde Secondary College team, our boys put up a good fight to argue the negative side, 'That Australia should increase its refugee intake'. Despite their best efforts, including strong rebuttals to some of the affirmative team's points, they were narrowly defeated by the Ryde team.

Across all debates, the boys have not only given intelligent arguments, but have worked hard as a team and engaged respectfully with other teams in a way that does the EBHS name proud.

Special thanks also to Samuel Kim, who was outstanding as chair and timekeeper for both our home debates.

Thanks to all those who have supported our debates in various ways, and all the best to the team as they now wait to hear if they have made it into the next round.







SCA UNDER ARMOUR BASKETBALL CAMP

EPPING BOYS HIGH SCHOOL
 BEN KNIGHT
 8 - 9 OCTOBER 2018
 9:00AM - 3:00PM
 8 - 16 YEARS
 ALL SKILLS
 CO - ED



1800 753 127
WWW.SPORTSCAMPSAUSTRALIA.COM.AU



Photographer of the Month



Arjun Arora in Year 7 is our Photographer of the Month for June, capturing a beautiful candid moment.

After a brief break, our Photographer for the Month of August is **Max Goldring** of Year 8, having captured a fantastic series of EBHS on the Rugby field.

All boys are encouraged to enter this competition via google classroom code: **mjncgjd**

Each month a student will be awarded photographer of the month - with all winners having the opportunity to win 'Photographer of the Year' and a \$200 voucher to purchase photography supplies.



News from Science - Mitchell Leggo, Science Teacher

Students from Year 10 recently contested the State Final of the Science and Engineering Challenge. Hosted by Newcastle University. The students were required to design and engineer a solution to a series of identified problems. Tasks included coding, bridge and tower construction, network mapping, designing a hydroelectric generator and functional catapult.

The boys were most appreciative of the opportunity to network with industry professionals throughout the event. They were able to link with engineers, academics, the defence force and representatives of the Chief Scientist of NSW.

With a competitive field the boys placed fifth on the day and are to be congratulated on their efforts.



BTM (Boys to Men) - Cameron Gordon, BTM Coordinator

BTM (Boys to Men) – Cameron Gordon, BTM Coordinator

Term 3 continues to be a busy time for BTM in the Middle School. A big thank you to the teachers and Administration Staff for their assistance and organisation this term.

The following activities have taken place in BTM lessons this term:

Year 7

- Formal Year Assembly to acknowledge outstanding achievements of our Year 7 students.
- *Escape from Worryville* Incursion and debrief lesson where students were able to discuss and reflect on the range of topics that can cause distress or uncertainty during adolescence.
- Time Management seminar by Elevate Education in preparation for Yearly examinations and assessments in Term 4.

Year 8

- Memory, organisation and study skills sessions by Macquarie University staff members and students. This was assisted by our Year 10 mentors.
- The presentation *Smashed* which gave students an insight into the physical and social consequences associated with alcohol and underage drinking.
- Taking part in R U OK? Day and reinforcing the importance of meaningful conversations occurring each day.

Year 9

- Formal Year Assembly to acknowledge outstanding achievements of our Year 9 students.
- Practical sessions involving budgeting and finance, learning to iron, shining shoes, car maintenance, relationships and social conversations.



UNIFORM SHOP

2018.... 20% OFF SALE

SALE ON FOR 2 WEEKS ONLY

20% OFF

**DAYLIGHT
SCHOOLWEAR**
MANUFACTURING CO.

**MONDAY 17th SEPTEMBER
TO
FRIDAY 28th SEPTEMBER**

DURING NORMAL SHOP HOURS

- * **20% OFF STOCKED ITEMS**
(excluding woollen jumpers, blazers and backpacks)
- * **NO REFUNDS OR EXCHANGES**
(unless garment is faulty)
- * **NO RAINCHECK**

PLEASE REMEMBER TO BYO BAG

News from Social Science—Stefan Kinsky

Year 10 Commerce and Accelerated Business Excursion Macquarie University Business Innovation Challenge

Last Tuesday and Wednesday, a group of fine Year 10 gentlemen participated in the Macquarie University Business Innovation Challenge. The challenge gave us a real life insight into the business world and its processes. Throughout the two days, the challenge entailed proposing an affordable and sustainable solution in factoring out genetic testing in life insurance premiums.

Judged critically by panel representatives from Munich RE and Macquarie University, our boys imparted their business/commerce knowledge into a real life business predicament. Come the end of the challenge, 5 of our boys rendered their groups successful in both the 'Best Pitch', 'Best group-work' and 'Best Idea' awards. Our honourable winners include Jordan, Liam, Luka, Jeremy and finally Naren.

The incubator facility at Macquarie fostered the boys' understanding of contemporary business issues through an extensive range of resources. We would like to extend our most kind-hearted gratitude to Mr Kinsky for his commitment and organisation of these sensational two days!



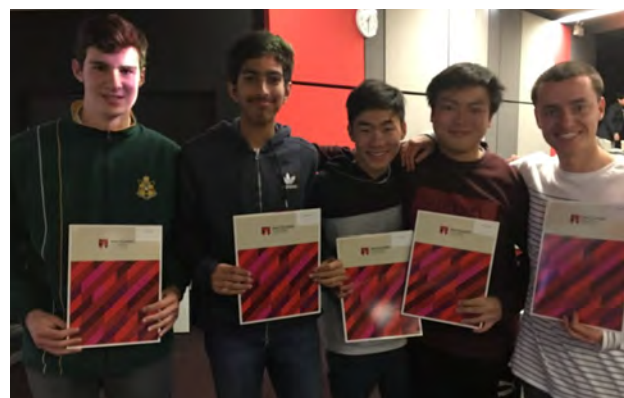
Drama

Over a week ago, the HSC Drama cohort performed in their practical examinations. Today, we received news from NESA that four of our boys have been nominated for OnSTAGE for their outstanding group project 'The Accidental Artist'. On-STAGE is an annual showcase comprised of selected works featuring the most outstanding HSC Drama performances from across the state.

Congratulations to Jack F, Ben C, Eli B and Antony D for their brilliant work. Their teacher, Miss Coleman, is beyond proud.



Academic and Community Partnerships



Congratulations to the Year 11 boys who attended Macquarie University's 6 week Leadership Certificate.

Aimed at developing future leaders, this program involved workshops and seminars to build the boys' communication, problem-solving and leadership skills to develop cross-cultural competency and impact in their community.

TAS Exhibition




Gladesville Orthodontics


BEAUTIFUL SMILES FOR THE WHOLE FAMILY

Specialist orthodontic practice offering state-of-the-art technology. Convenient location with parking on premises.

Treatments for adults and children:
Early Intervention | Braces | Clear Braces
Invisalign | Bite and Jaw Assessment

Book an appointment now.
No referral necessary.

P (02) 9817 4018 | E info@gladesvilleorthodontics.com.au
www.gladesvilleorthodontics.com.au
f [gladesvilleorthodontics](https://www.facebook.com/gladesvilleorthodontics) @ [gladesvilleorthodontics](https://www.instagram.com/gladesvilleorthodontics)
163 Victoria Road, Gladesville NSW 2111



bunions

foot care

ingrown nails

fungal nails

heel pain

infinitepodiatry

At Infinite Podiatry we treat heel pain, fungal nails, skin conditions, sore feet, bunions and ingrown nails.

We treat all age groups. Our youngest is 18 months old, our oldest 101 years old.

Principal Podiatrist
Robyn Damp

Ground floor
Unit 2
13 Bridge Street
Epping NSW 2121

At the round about on
the corner of Bridge St
and Rawson St

9869 2888

Community Notices Board

Stage 1 Macquarie Park Bus Priority and Capacity Improvements

September 2018 construction update

Construction work scheduled for **September:**

Zone 1: Intersection of Herring Road and Epping Road <ul style="list-style-type: none"> Modifying the traffic signals Modifying the traffic island Asphalt work at the intersection
Zone 2: Herring Road (between Waterloo Road and Epping Road) Completed
Zone 3: Intersection of Waterloo Road and Herring Road <ul style="list-style-type: none"> Upgrading the drainage at the north-western corner Upgrading the road, kerb and footpath at the north-western corner of the intersection Modifying the traffic signals Construction of pram ramps
Zone 4: Waterloo Road (between Herring Road and the entrance to Macquarie Centre) <ul style="list-style-type: none"> Modifying the traffic signal opposite to the Macquarie Centre
Zone 5: Intersection of Waterloo Road and Lane Cove Road <ul style="list-style-type: none"> Upgrading the pavement at Lane Cove Road Modifying the traffic signals Asphalt work at the intersection
Zone 6: Lane Cove Road (between Waterloo Road and Epping Road) Modifications to the road and footpath associated with extending the bus indent <ul style="list-style-type: none">
Zone 7: Intersection of Lane Cove Road and Epping Road Upgrading the traffic island at Epping Road slip lane on Lane Cove Road <ul style="list-style-type: none"> Upgrading the road, kerb and footpath turning left onto Lane Cove Road from Epping Road Asphalt work at the intersection Modifying the traffic signal at the intersection
Zone 8: Lane Cove Road (between Lorna Avenue and Allengrove Crescent). <ul style="list-style-type: none"> Completed
Zone 9: Waterloo Road between Herring Road and Khartoun Road <ul style="list-style-type: none"> Tree removal Installation of new pedestrian fencing in the median Construction of pedestrian refuges Construction of pram ramps Upgrading the road
Compound site: <ul style="list-style-type: none"> We have established a site compound and site storage area at 166a Epping Road. There will be an increase in heavy vehicles entering and exiting the site from Epping Road. Please take care when driving past the project site compound.

Community Notices Board

Top up and tap on with Opal

To prepare for the launch of the [Sydney Metro](#) in the second quarter of 2019, Macquarie University, Macquarie Park and North Ryde Stations will close from 30 September 2018 for around seven months.

To keep your staff and visitors moving during the upgrade, our [Station Link](#) bus services will operate between Epping and Chatswood and are pre-pay only, meaning cash payment is not available when you hop on.

You can pick up Opal cards at your [nearest Opal retailer](#) and top up [online](#) or register your card for automatic top up to make sure you are always prepared. We encourage you to download the Opal app to receive journey tips and Opal information directly to your phone and read the [Opal factsheet](#) for more information.

Station Link pop ups are happening this week!

Transport for NSW is providing **personalised** trip planning this week through **Station Link Trip Planning Pop Ups** being held across the precinct. Come along to your nearest pop up and let the team help you plan your trip.

Station Link Trip Planning Pop Ups will be held across the precinct on the following dates:

- A. Monday, 10 September, 12pm -2pm, courtyard of [78 Waterloo Road, Macquarie Park](#)
- B. Tuesday 11 September, 10am-12pm, courtyard of [3 Richardson Place, North Ryde](#)
- C. Tuesday 11 September, 1-3pm, entrance to the building of [67 Epping Road, Macquarie Park](#)
- D. Wednesday 12 September, 10am-3pm, outdoor terrace of [1 Julius Avenue, North Ryde](#)
- E. Thursday 13 September, 10am-3pm, entrance to the building of [16 Giffnock Avenue, Macquarie Park](#)

If you are unable to attend a pop up, all the details about the Station Link services are now available at [Transpwns.info](#) for you to plan your trip.

Have you tried Keoride?

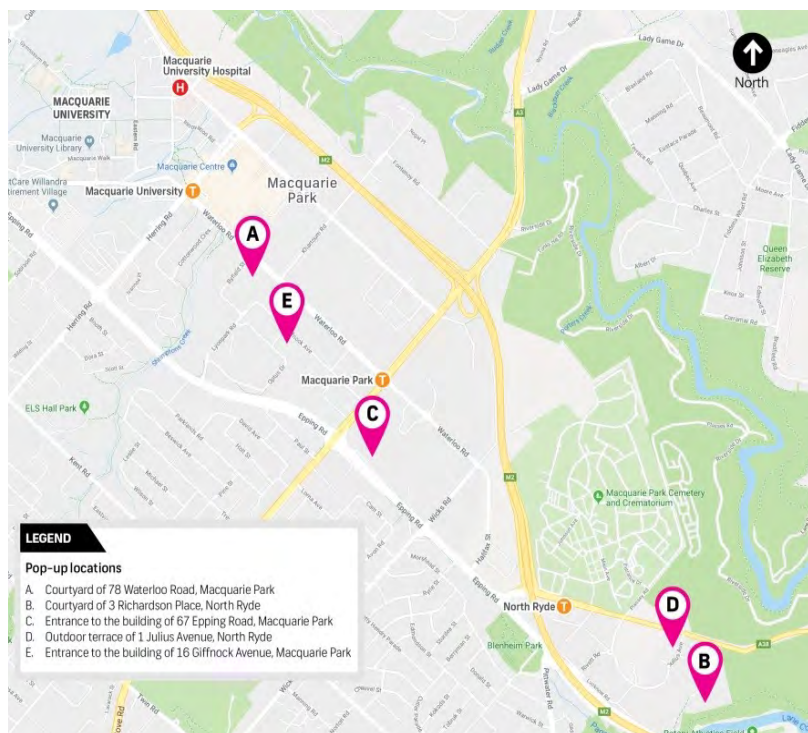
Transport for NSW is trialling a new [On Demand](#) public transport service for people who live or work within 7.5km of the Macquarie Park precinct.

The [Keoride](#) On Demand Transport service is available to try out now and will continue to operate while the Epping to Chatswood rail line is upgraded. Services run 6-10am and 3-7pm Monday to Friday, and prices are comparable to Opal fares, making it a great option for your staff to travel to and from work.

The [On Demand factsheet](#) provides more information on the pickup/drop off locations and how to book.

Kind regards

The Station Link Team



Community Notices Board

Station Link[®]



Important Information for Schools

Less than two weeks until the start of Station Link!

From 30 September 2018, Station Link bus services will operate while the rail line between Epping and Chatswood closes for upgrade to Metro Services. Stations that will close for upgrade include Macquarie University, Macquarie Park and North Ryde.

Students travelling to school from Macquarie University, Macquarie Park or North Ryde Stations can use a Station Link service or regular buses to connect to their destination. Parents and students can now plan their trip at TransportNSW.info. Students that travel by train from other locations should also plan their trip to understand if their journey to school will change.

Key features of Station Link include:

- High frequency, turn-up-and-go services to stations between Epping and Chatswood at least every six minutes during the peak. More than 120 new, fully accessible, air conditioned buses
- More than 110 services per hour in the busiest parts of the day.
- A dedicated high frequency service to Macquarie University Campus from Epping Station.

A loop service running at least every 10 minutes 7 days a week to all stations between Epping to Chatswood.

Please note there will be no changes to existing bus services or special school buses.

To plan your new trip, or find out more about Station Link, please visit transportnsw.info.

GIVING BLOOD FEELS GOOD

Every donation can save three lives.

Mobile Blood Service visiting:

Epping Baptist Church
Corner of Ray and Carlingford Roads

Monday 24 Sept
Tuesday 25 Sept


1.30pm – 6.30pm
8.30am – 1.30pm

Drink up! Have 3 or 4 glasses of water or juice in the hours before you donate
Eat! Have a good sized breakfast or lunch
Please bring photo I.D. with you

To make an appointment call 13 74 95
or visit donoraid.org.au



Dr Who Club
Thursday during lunchtime in K04



See Ms Lane in the science faculty for more information

ALL WELCOME

Second Hand Uniform Shop

OPEN TWICE EACH MONTH

1st and 3rd Thursday Each Month

12.30pm-2.30pm

(during school term)

Located at the back of the school hall.

There is a great range of EBHS uniforms at very reasonable prices. All proceeds are returned to the school for the benefit of all boys.



Epping Boys High School
is on Facebook

CHESS CLUB

is located in K23 during lunch time on Monday, Tuesday, Thursday and Friday. No experience necessary. Come along and make new friends.

ALL WELCOME

Year 8 are invited to play on the
BIG OUTDOOR BOARD
in the Year 8 area on
Thursdays at lunchtime



RECYCLE YOUR BATTERIES @ EBHS

Batteries are made up of heavy metals and other toxic elements, including nickel, cadmium, alkaline, mercury, nickel metal hydride, and lead acid. It is these elements that can threaten our environment if not properly discarded and/or recycled.

A household battery recycle bin can now be found outside the science staff room.

Please take advantage of this service and help reduce toxic chemicals poisoning our environment by disposing of your household batteries in our recycle bin.

Recycle bins can also be found at Eden Gardens at North Ryde



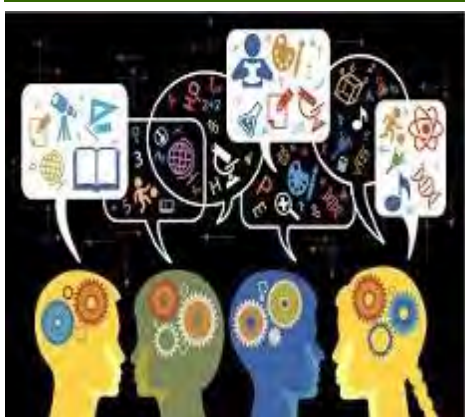
STEAM

ScienceTechnologyEngineeringArtsMathematics

STEAM challenges students to solve the problems of the future in a creative way supported by evidence and first-hand research.

All students are welcome to come along and change the world on Thursdays at lunch time in K07.

See Mr Leggo in Science





Daylight Sportswear Pty Ltd

ABN 76 069 733 455

8 - B Line Pine Pl, Smooten Grange NSW 2567

Tel: (02) 4648 1066 Fax: (02) 4647 0143

Email: daylight@daylightcorp.com

Epping Boys High School Uniform Shop

Price List

Name: _____ Year: _____ Date: _____ Rec# _____

Item	Price \$	Size	Qty	Total incl GST
Tailored Trousers	43.00			
Grey Beltloop Shorts	35.00			
S/S Grey Middle School Shirt	30.00			
L/S Grey Middle School Shirt	33.00			
S/S White Senior School Shirt	30.00			
L/S White Senior School Shirt	33.00			
Jumpers				
Green Wool Jumpers 10 – 16	72.00			
Green Wool Jumpers 18 – 22	72.00			
Green Wool Jumpers 24 – 28	72.00			
Sport / PE				
Microfibre Jacket	65.00			
Winter Jackets	65.00			
Trackpants	40.00			
Sport Polo	35.00			
Sport Shorts Darvall	26.00			
Sports Shorts Harris	26.00			
Sports Shorts Terry	26.00			
Sports Shorts Midson	26.00			
Others				
School Socks S 2-8; M 8-11; L 11-14; XL 14-17	7.50			
Rugby Socks	8.00			
Boys Blazers	110.00			
Caps – one size	12.00			
Middle School Tie	20.00			
Senior School Tie	20.00			
Total to Pay				

Cash and credit card – eftpos facility. **Cheques will not be accepted.**

The Uniform Shop is open:

Monday 10.00 am until 2.00 pm

Thursday 7.30 am until 11.30 am

The Uniform Shop is located in G Block. If you have any queries, please contact Delma Marsden on 0451 255 624



Please note that we are now bag free

EBHS CHANGE OF STUDENT PERSONAL INFORMATION

Student First Name: Student Surname: Roll Class:

Previous Address:

..... Date Address Changed:

New Address:

..... Post Code:

Home Phone:

Parent/Guardian 1: Work Phone: Parent/Guardian 1: Mobile:

Parent/Guardian 1: Email:

Parent/Guardian 2: Work Phone: Parent/Guardian 2: Mobile:

Parent/Guardian 2: Email:

Emergency Contact 1 (someone other than Parent/Guardian)

Name: Emergency Contact Phone:

Relationship to Student (eg Aunt, Friend):

Emergency Contact 2 (someone other than Parent/Guardian)

Name: Emergency Contact Phone:

Relationship to Student (eg Aunt, Friend):

Parent/Guardian Name:

Parent/Guardian Signature: Date:

OFFICE USE ONLY

☐ ERN

☐ Student File

☐ NESA

☐ Transport

SMS NOTIFICATIONS

Absences

If you receive a text regarding your son's absence, please only reply if he is sick or on leave.

If you believe your son is at school or on a school excursion etc., please telephone the school on 9869 2701.

General SMS Information

Due to the SMS system we have, all text messages are sent in bulk from the computer. We are unable to reply to any text messages we receive. If you have any queries about an SMS please phone the school on 9869 2701.

Notification of Absence

If your son is going to be absent, please call the school ASAP and upon return, please use the following form to explain your son's absence. NB: Early Leavers permission notes should be submitted to the Front Office. These notes must be signed by a deputy principal prior to being submitted to the front office. If your son will be away for five or more days, an application for extended leave/travel form must be filled out and submitted to the Principal two weeks prior to absence.

Forms may be collected from the Front Office.



NOTIFICATION OF ABSENCE

Student Surname: Given Name: Roll Class:

WHOLE DAY ABSENCE Date(s): LATE ARRIVAL Date:

EARLY LEAVER Date: Departure time:

Reason for absence:

Parent/Guardian Name: Parent/Guardian Signature: Date:
(Please Print)

FAQs

Will my journey time increase during the upgrade?

Bus reliability is dependent on stopping patterns and the time of day. It could take the average customer at least 10 more minutes, depending on the replacement bus trip, time of day of travel and interchange to other modes.

Station Link services will operate on a turn-up-and-go basis, with at least one bus every 10 minutes between Epping and Chatswood. More services will be provided in the peak periods with a bus at least every six minutes.

To stay across the latest updates, visit transportnsw.info

Will there be increased traffic congestion during the upgrade?

The Macquarie Park precinct and surrounding road network currently experiences traffic congestion, particularly during peak periods. We are working closely with the community, businesses and local government to help address congestion and will implement targeted travel demand strategies aimed at reducing vehicle numbers in the peak.

Transport for NSW and Roads and Maritime Services is also investing in additional bus priority and capacity improvements, and reallocating parking to improve bus service reliability during the upgrade. The Transport Management Centre will continue to proactively manage the network to optimise the flow of traffic during this temporary disruption.

How much will I be charged travelling on one of the new bus services

You will need a valid Opal card to travel on Station Link services. You will be charged a standard train fare. Similar to train journeys, a 30 per cent off-peak discount on full price Opal fares will apply to journeys on these bus services. For details about off-peak travel, visit Opal.com.au



Where can I get more information?

For more information about Station Link, visit transportnsw.info

If you would like to register to receive regular updates about Station Link during the upgrade, please email StationLink@transport.nsw.gov.au

Find out more at
transportnsw.info



Station Link



Epping to Chatswood
From 30 September 2018

What is Station Link?

Station Link is a \$49 million investment in more than 120 new, fully accessible, air-conditioned buses providing thousands of extra services from 30 September 2018. High frequency Station Link services will keep customers moving while the rail line between Epping and Chatswood is upgraded for up to seven months, ahead of Sydney Metro Northwest opening in the second quarter of 2019.

Key features of Station Link include:

- High frequency, turn-up-and-go services to stations between Epping and Chatswood at least every six minutes during the peak.
- More than 110 services per hour in the busiest parts of the day.
- A dedicated high frequency service to Macquarie University Campus from Epping Station.
- A loop service running at least every 10 minutes 7 days a week to all stations between Epping to Chatswood.

Station Link bus services are available on the trip planner at transportnsw.info and on real time apps.

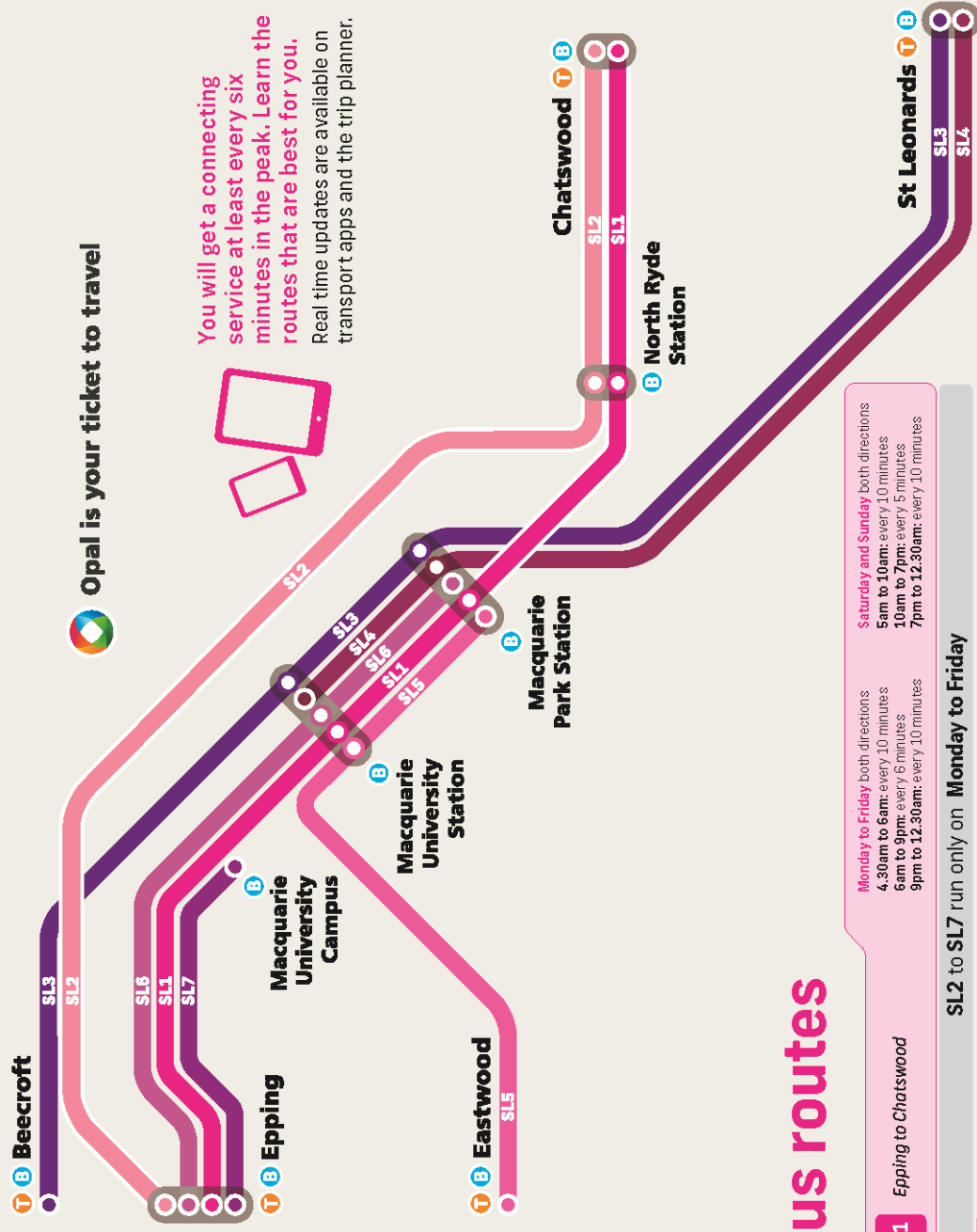
A package of road and intersection upgrades, including bus priority measures, will be completed by the introduction of Station Link to improve public transport reliability.

Why is the Epping to Chatswood line being upgraded?

The Epping to Chatswood line needs to be converted to metro standards ahead of Sydney Metro Northwest which opens to customers in the second quarter of 2019. Customers will get a train every four minutes in the peak in each direction – that's 15 an hour, almost four times as many as now (in the peak direction).

The five existing stations along the line – at Epping, Macquarie University, Macquarie Park, North Ryde and Chatswood – will have screen doors along the full length of the metro platforms to keep people and objects like prams away from the tracks, improving customer safety and allowing trains to get in and out of stations much faster.

To upgrade the existing suburban railway to metro standards, major work needs to be done –including new signalling and communications systems, electrical and fire and life safety systems.



Bus routes

SL2 to SL7 run only on Monday to Friday		
SL1 Epping to Chatswood	Monday to Friday both directions 4.30am to 6am: every 10 minutes 6am to 9pm: every 6 minutes 9pm to 12.30am: every 10 minutes	Saturday and Sunday both directions 5am to 10am: every 10 minutes 10am to 7pm: every 5 minutes 7pm to 12.30am: every 10 minutes
SL2 Epping to Chatswood via Macquarie Park	To Chatswood 6am to 10am: at least every 6 minutes	To Epping 3pm to 7pm: at least every 6 minutes
SL3 Beecroft to St Leonards via Macquarie University and Macquarie Park	To St Leonards 6am to 10am: every 6 minutes	To Beecroft 3pm to 7pm: every 6 minutes
SL4 St Leonards to Macquarie University via Macquarie Park	To St Leonards 6am to 10am: at least every 20 minutes 3pm to 7pm: at least every 4 minutes	To Macquarie University 6am to 10am: at least every 4 minutes 3pm to 7pm: at least every 15 minutes
SL5 Eastwood to Macquarie Park via Macquarie University	To Macquarie Park 6am to 10am: every 6 minutes	To Eastwood 3pm to 7pm: every 6 minutes
SL6 Epping to Macquarie Park via Macquarie University	To Macquarie Park 6am to 10am: every 12 minutes	To Epping 3pm to 7pm: every 10 minutes
SL7 Epping to Macquarie University Campus	To Macquarie University Campus 7am to 3pm: every 10 minutes	To Epping 10am to 7pm: every 10 minutes

All times are approximate